



# MINING MONITORING SYSTEM SOFTWARE

**Presentation - 2025**

Visit Our Website  
**[www.goanny.com](http://www.goanny.com)**

# Introduction

**Mining Monitoring System Software(MMSS) is an initiative led by a passionate team of professionals with diverse skills and backgrounds, united by a common goal - to protect India's natural resources through innovation and responsibility.**

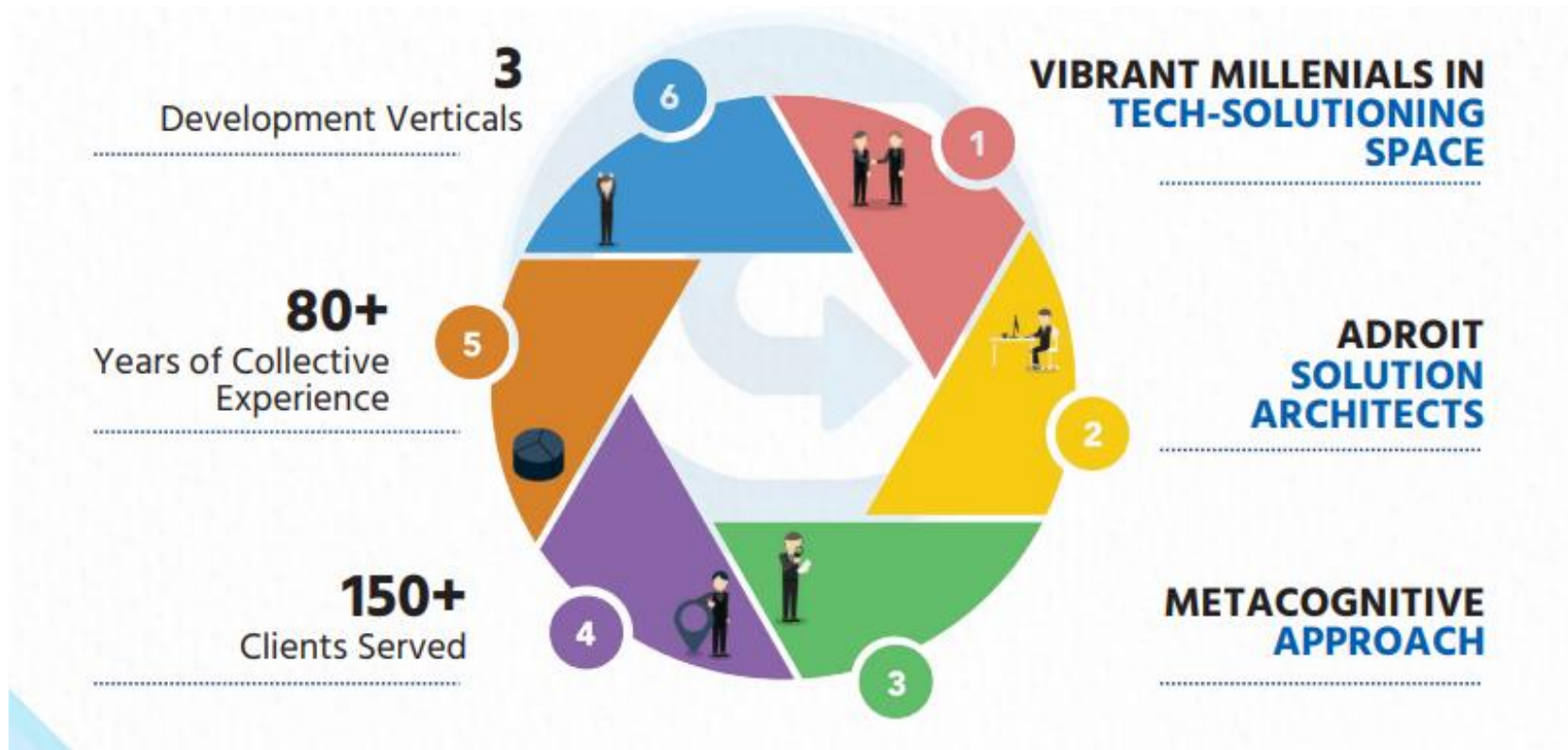
**Mining and mineral transportation comes with a host of challenges - safety, illegal transportation, overloading, environmental impacts and a general lack of transparency. These issues not only impact compliance but also hinder sustainable growth in the sector.**

**MMSS offers a smart, technology-driven solution specifically designed to address these challenges. By enabling real-time monitoring of mining activities and mineral movements, the system ensures operational efficiency, enhances safety standards and promotes transparent, legal mining practices.**

**Designed to be aligned with the needs of government authorities, this solution supports better decision-making, regulatory enforcement and public trust in the mining ecosystem.**

# About Us

Goanny Technologies, a Tech-Enablement company front lining the transcendence of your Business Narratives into Consumer Delight



# What We Do?

A company is a group of people who come together to work on their promises..

A promise to **Find & Solve Problems** for whomsoever needs.

A promise to **Add Value to the World** and leaving it a better place

A promise to constantly elevating the bar so that the **Option to Settle, Perishes!**

GoAnny is also a set of such people with a few promises and a will to live up to them.

Coming from disparate and truly unorthodox expertise, consisting 20 strong resources spread across 3 teams GoAnny is made of:

TECHNOLOGY  
SOLUTIONS

DESIGN AND  
PRODUCTION

BRANDS AND  
MARKETING

**We believe that “BUSINESS is a  
Harmony of PEOPLE And  
TECHNOLOGY”**

## Purpose of the software:

The main objective of MMSS is to create a centralized, smart monitoring system that:



**Tracks the movement of sand and other minerals.**



**Ensures the safety of workers and machinery.**



**Detects and prevents unauthorized transportation or overloading**



**Supports better decision-making using real-time data.**



**Helps comply with environmental and government regulations.**

# What Is A Product Development Strategy?

For decades, manual processes in the management of minor minerals led to inefficiencies like delays in monitoring and reporting, and a lack of end-to-end tracking systems. This made it difficult for the Revenue Department to monitor the actual quantities of minerals excavated.

## Solution through Product Development Strategy:

To address these challenges, the Revenue Department implemented an **integrated IT-enabled process**. This digital solution enables effective tracking and monitoring of minor minerals across Maharashtra, including:

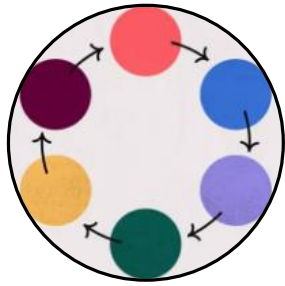
**Types of minerals monitored:** Limestone, Laterite, Ordinary Sand, China Clay, and others.

## Goals of the strategy:

1. Reduce delays in monitoring and reporting.
2. Provide end-to-end tracking of minerals from quarry to destination.
3. Improve transparency and accuracy in mineral excavation and usage records.

This approach demonstrates a product development strategy focused on leveraging technology to streamline operations and enhance governance.

## The benefits of a product development strategy



**Avoid risk at the product ideation and conception stages**



**Decision support to remove under-performing products**



**Help your existing products respond to market changes quickly**



**Lead your development team towards a bigger bottom-line impact**





## Key Features:

### Real-time monitoring

Mineral Guard collects live data from mineral sites and transport vehicles with various sensors, GPS devices, IoT tools, and cameras

### Smart transport tracking

With GPS tracking, it monitors each truck or trolley, recording where the minerals are picked up from, where they are going, and whether the route is being followed correctly.

### Incident reporting and compliance

This system records all alerts, incidents and violations - creating easy-to-understand reports that support audits and legal compliance

**“Each feature is a step towards a larger vision – a move towards safe and sustainable mining management.”**

# System capabilities and monitoring features



**Royalty Payment Notifications**



**Smart Sales Notifications**



**ETP (Electronic Transit Pass) Analysis**



**Sales Analysis  
(Daily, Weekly,  
Monthly)**



**User Activity Monitoring**



**Data Storage**



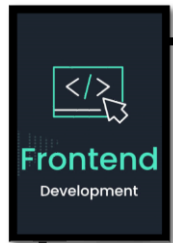
**Dedicated Server Hosting**



**ETP On SMS**

- If any user completes a royalty payment, the system automatically generates a notification to keep stakeholders informed in real time.
- When a sale is reported at a price significantly higher or lower than the average market rate, the system flags it and sends an alert for review. This helps identify discrepancies or potential abuse.
- The system enables detailed analysis of ETP, which helps to efficiently track movement, quantity, and compliance.
- Detailed reports are available showing sales performance across all users or locations on a daily, weekly, and monthly basis to make better decisions.
- The system identifies which users are actively using the platform and which are inactive. This helps in engagement tracking and operational transparency.
- All data is stored securely in our dedicated data center, ensuring data integrity and high availability.
- This software is hosted and run on our own servers, which offers better control, reliability, and customization according to project needs.

# Project Development Platforms



## Front End Development

Website and admin panel UI design and API calling



## React Js & React Native

For web and mobile app development



## Java Script for logic Building



## Backend Development

API creation for project



## Node Js & Express Js

For API creations



## MongoDB – NoSql Database

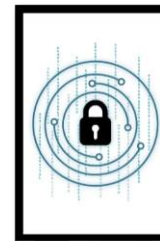


## Server and Security

Data hosting and security



## Amazon Web Server (AWS)



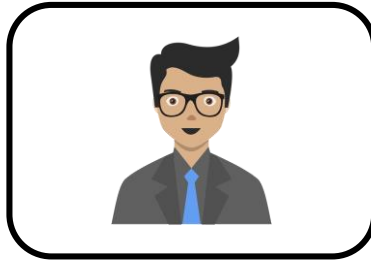
Encryption and descriptions for all data

# User Management

All User can access the web portal and mobile app for the manage MMSS



**Government  
Officer**



**Lease Supervisor /  
Billing Agent**



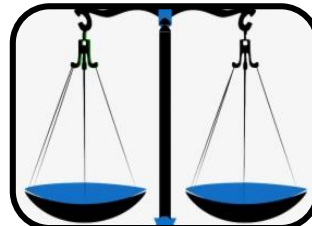
**Driver**



**Consumer**



**Setu Seva**



**Weight Bridge**

# Sand Management

**Sand Dashboard  
& Analytics**



**Sand Plot  
Registration**

**Sand Booking  
MGMT**

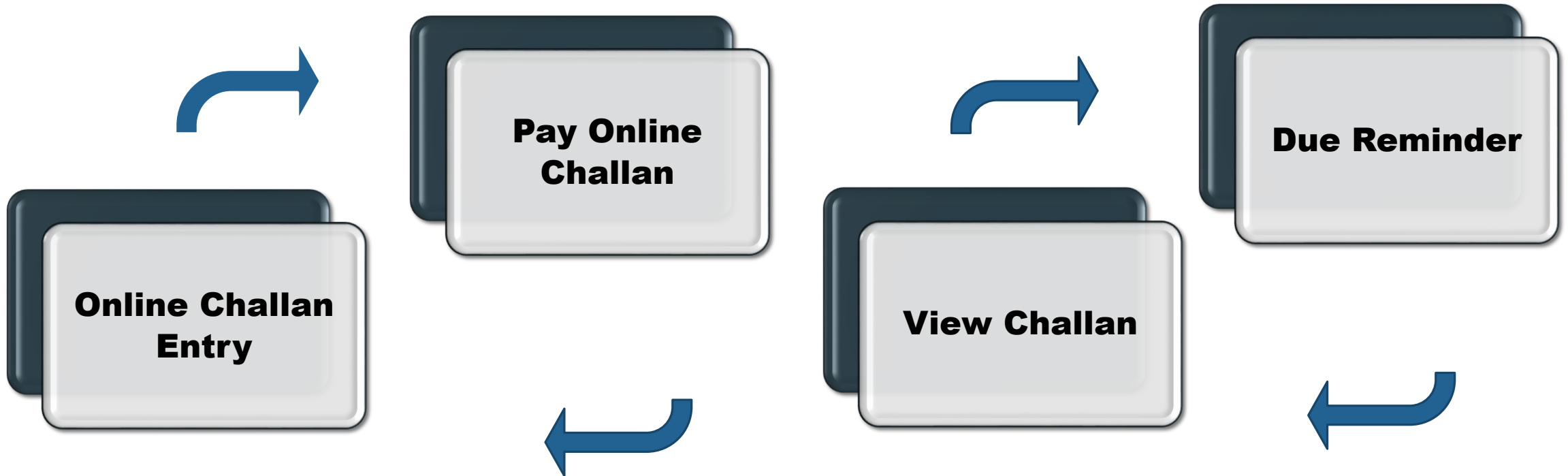


**Sand Reports**



Activate Wind

# Fine Management



# Demand Note



01

**Permanent Lease**

02

**Temporary Lease**

03

**Demand Note List**

04

**Registered TTP Order**

05

**Application Fee**

06

**Demand Note Request Approval**

07

**Online Collection**

# Notification Management





# Vehicles Registration and Tracking



**Registration of  
Vehicle**

**RTO API  
Integration**

**View Vehicles  
Details**



**Vehicle  
Tracking**

**Vehicle current location  
View**

# Royalty book

**TP Book order**



**TP Book status**



**List TP Book**



**Remainder  
Notification**



# Registers Sites



01

**Quarry Registration**

02

**Stockyard Registration**

03

**Crusher Registration**

04

**Quarry for Project Registration**

05

**Seized Minerals Registration**

06

**Illegal Registration**

# Revenue Generation

**Office Wise  
Revenue**

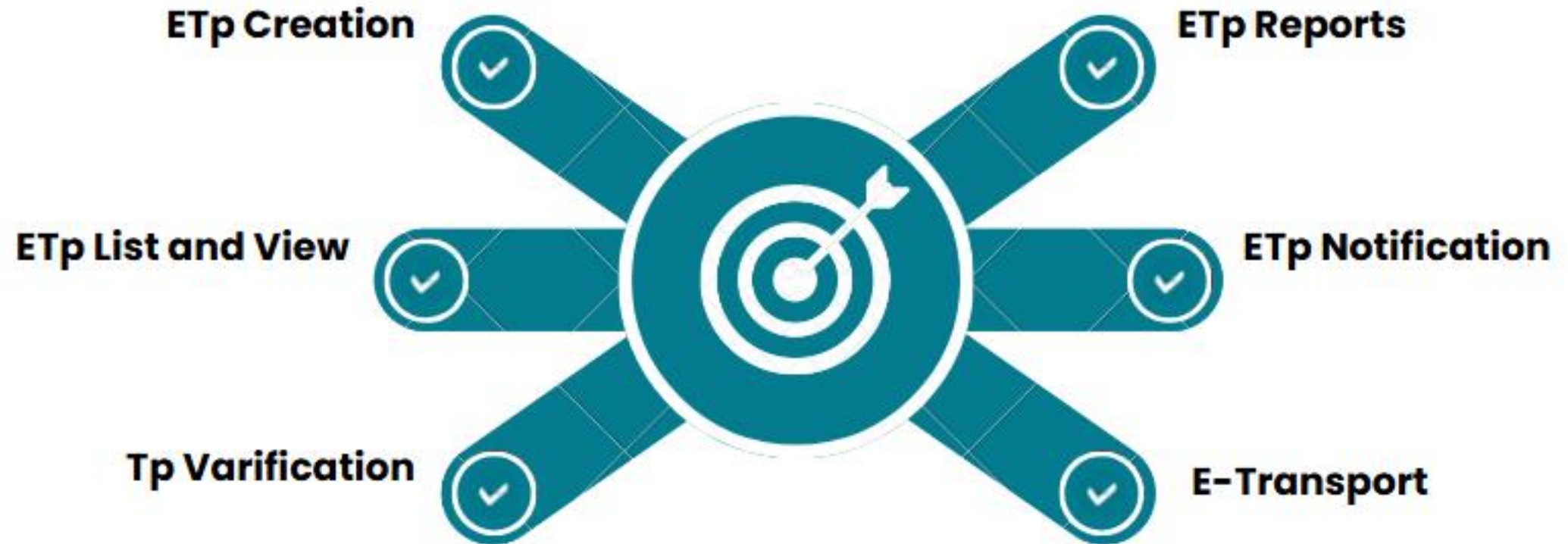
**Assign Challan  
To Tehsil**

**District Gras  
Challan**

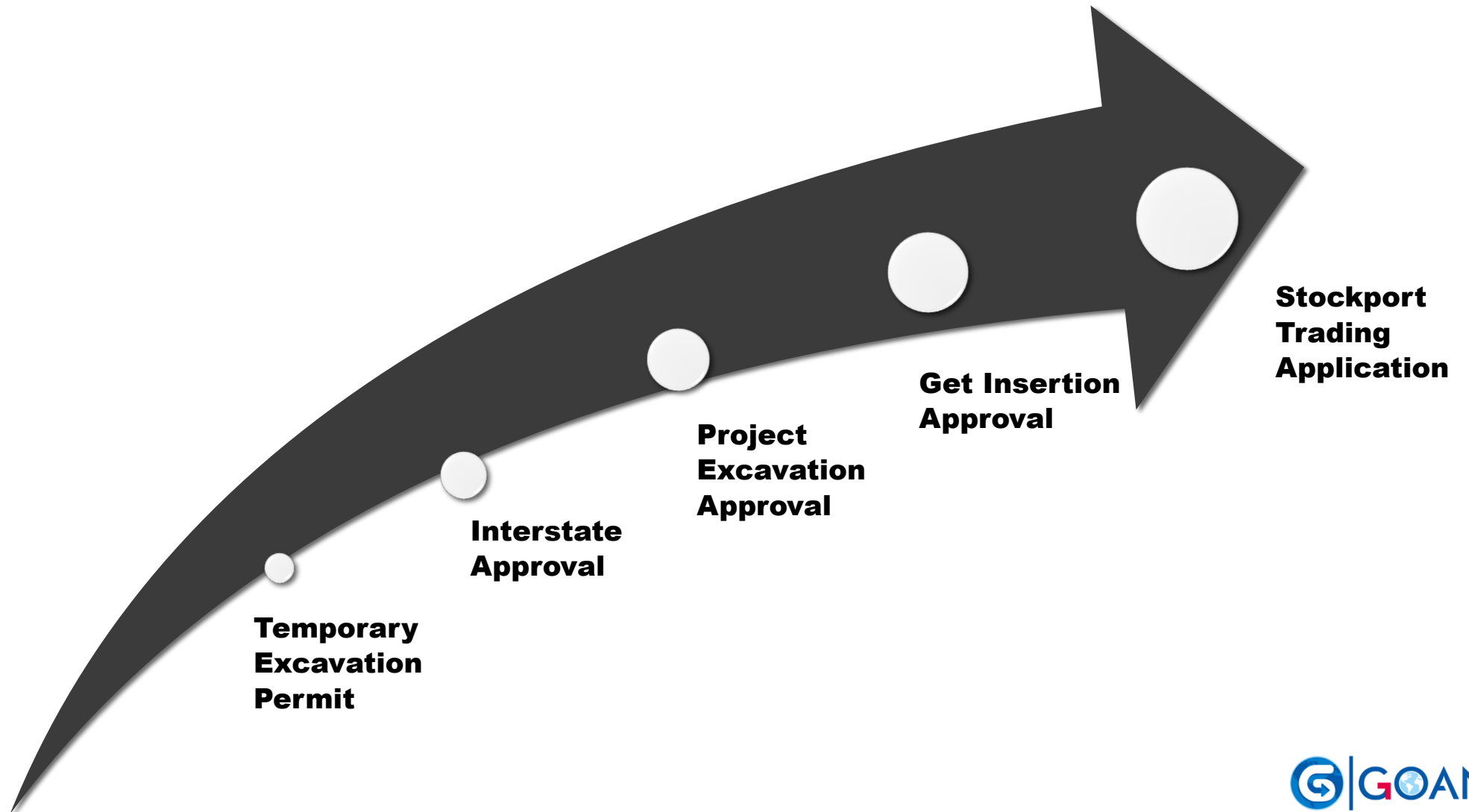
**Monthly  
Revenue**



# E – Transport Permit Management



# Approval Management



# All Functionality

- |    |                        |    |                        |    |                           |
|----|------------------------|----|------------------------|----|---------------------------|
| 01 | CCTV Integration       | 07 | Office Registration    | 13 | Minerals price Management |
| 02 | Toll Plaza Integration | 08 | eAuction               | 14 | All Dashboards Management |
| 03 | Drone surveillance     | 09 | Monitoring             |    |                           |
| 04 | Assessments Management | 10 | Targets Management     |    |                           |
| 05 | Charts Management      | 11 | GIS                    |    |                           |
| 06 | Reports Management     | 12 | GPS Device Integration |    |                           |





# THANK YOU

FOR YOUR ATTENTION.....



**+91 9376937366**



**Support@goanny.com**



Visit Our Website

**www.goanny.com**